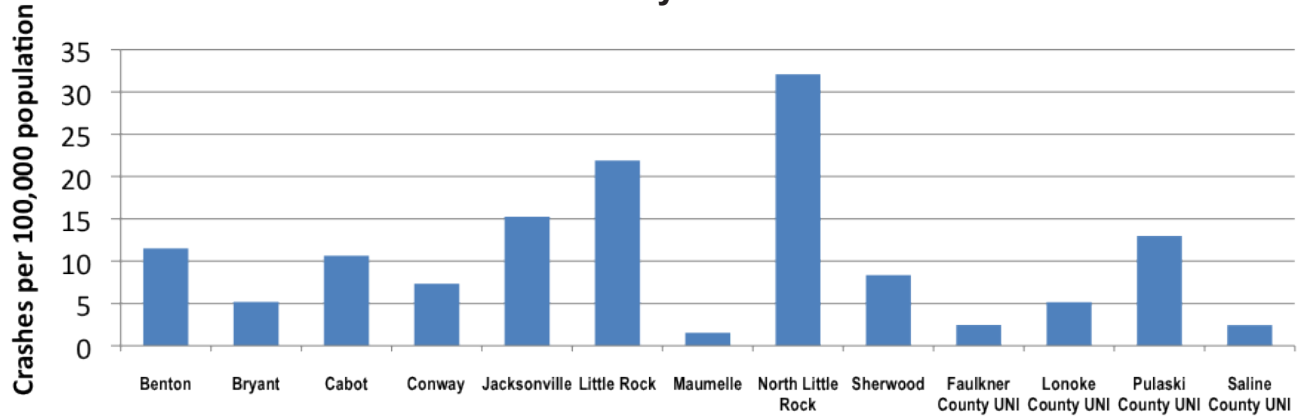
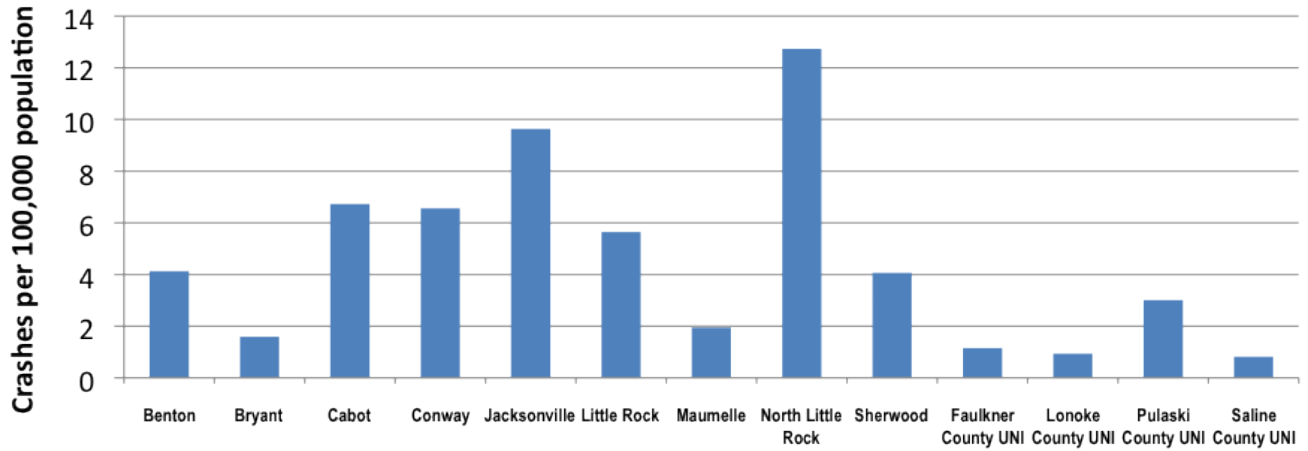


# Bicycle & Pedestrian Safety By the Numbers

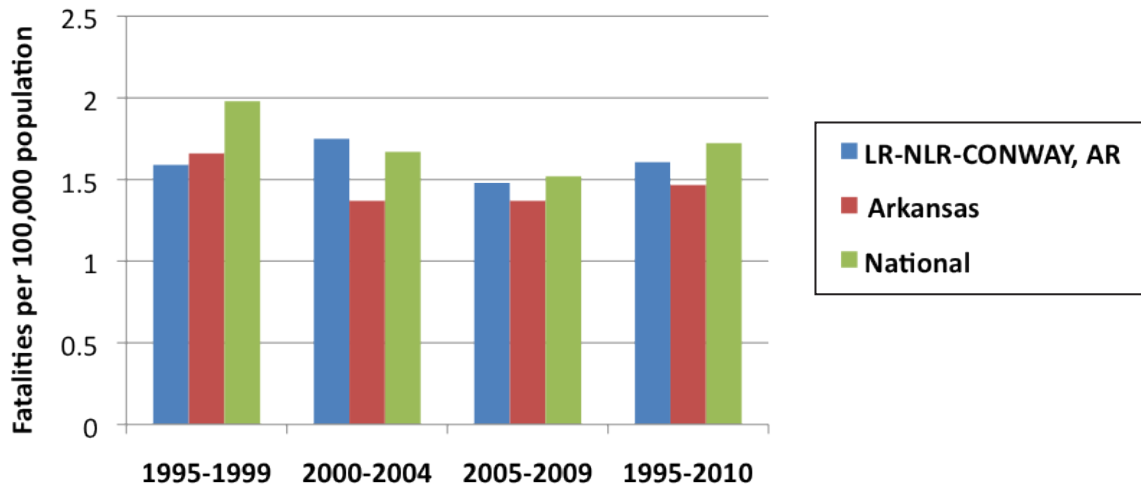
## Pedestrian Crash Rate by Jurisdiction 2001-2010



## Bicyclist Crash Rate by Jurisdiction 2001-2010



## Comparison of Pedestrian Fatality Rates (per 100,000 population)



## Putting It In Perspective

140 pedestrian/50 cyclist crashes per year = 100 Serious Injuries + 11 Fatalities  
 6 Vehicle/Train crashes per year = .71 Fatalities

## Who Is At Risk?

Black Males under 16 = Highest Pedestrian and Bicycle Crash Rate  
 Black Males over 16 = Highest Pedestrian Fatality Rate

## When Do Crashes Happen?

60% of pedestrian crashes occur at dark/dawn/dusk  
 76% of bicycle crashes occur during daylight hours

### Highest Pedestrian Crash Intersections

Intersection	Crashes
Markham / LaHarpe (LR)	9
6th / Broadway (LR)	8
University / Town and Country (LR)	7
Captiol / Broadway (LR)	6
McCain / JFK (NLR)	5
Magnolia / Broadway (NLR)	5
Camp Robinson / Allen (NLR)	5
Baseline / Geyer Springs (LR)	4
12th / Washington (LR)	4
7th / Broadway (LR)	4
Markham / Broadway (LR)	4
Highway 38 / S Polk (Cabot)	4

### Highest Corridor Crash Rates (Pedestrian and Cyclist)

Corridor	Crashes	Mileage	Crash Rate
S Broadway (LR)	34	0.628	54.14
Pike Ave (NLR)	29	0.779	37.23
Camp Robinson Rd (NLR)	22	0.952	23.11
Col. Glenn / Asher Ave (LR)	47	2.736	17.18
Geyer Springs Rd (LR)	22	1.473	14.94
E Broadway St (NLR)	55	4.507	12.20
W 12th St (NLR)	24	2.036	11.79
Main St (NLR)	10	0.908	11.01
W Main St (Cabot)	22	2.071	10.62
Baseline Rd (LR)	42	4.091	10.27

Analysis of the bicycle crashes at intersections yielded only one intersection with highest number of crashes with 3 (Pike Ave and Pershing Ave in North Little Rock) and 30 other intersections with 2 crashes.



**IMAGINE  
CENTRAL  
ARKANSAS**  
Plan Smart. Live Smart.



**METROPLAN**  
SMART PLANNING MAKES SMART PLACES.